

# Agenda

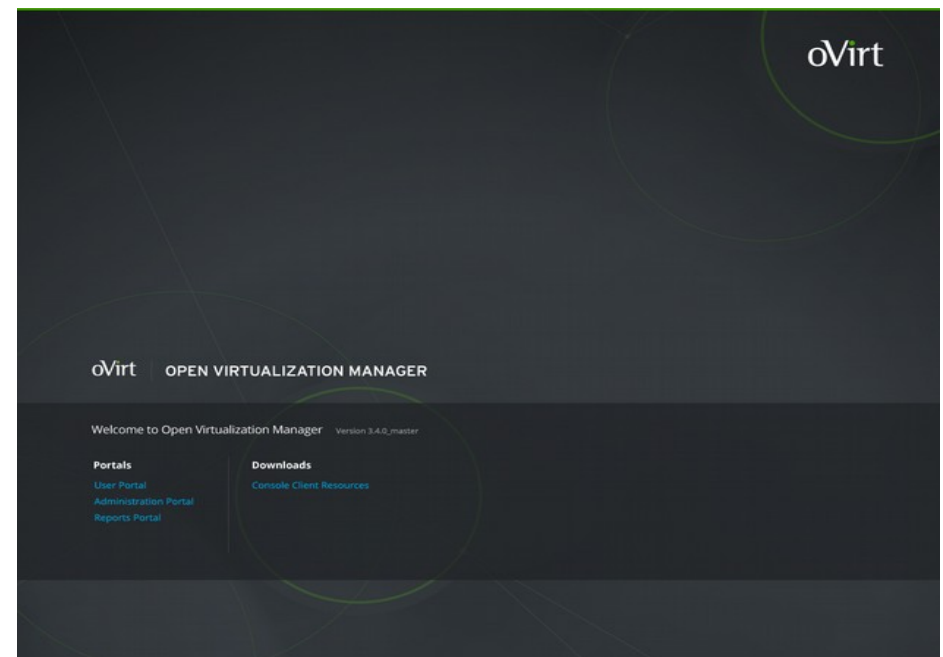
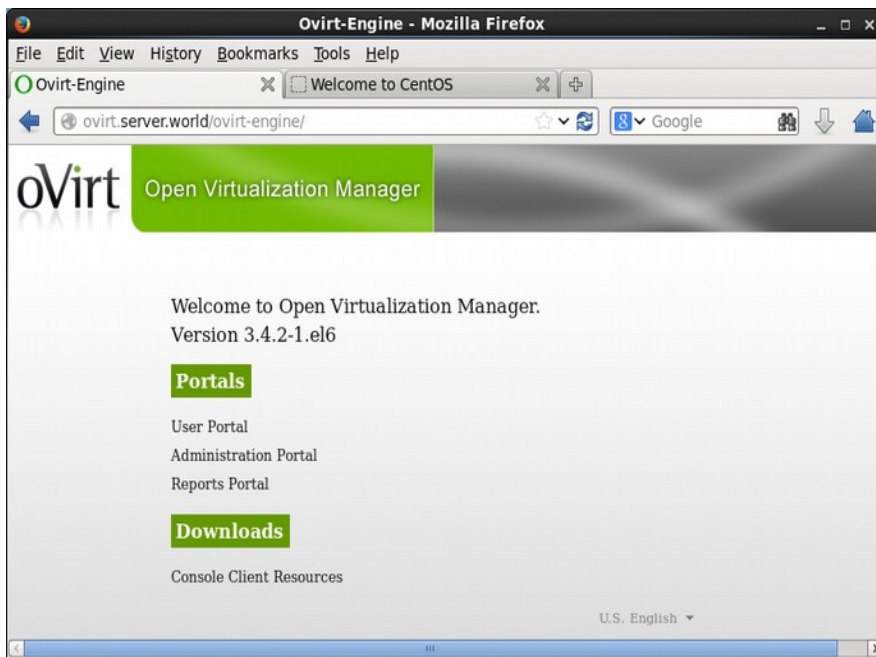


- UI
- Installation
- Infra
- Network
- SLA
- Storage
- Virt
- Bright Future (is that 3.6?)

# UI Look and Feel



- UI – PatternFly project (phase 1)



# UI Look and Feel



oVirt Open Virtualization Manager

Logged in user: admin@internal | Configure | Guide | About | Sign Out

Search: Host

Data Centers Clusters Hosts Networks Storage Disks Virtual Machines Pools Templates Volumes Users Events

System

Expand All Collapse All

Name	Hostname/IP	Cluster	Data Center	Status	Virtual Machines	Memory	CPU	Network	SPM
ovirtnode1	192.168.125.108	Engineering32	Engineering32	Up	2	32%	23%	0%	SPM
ovirtnode2	192.168.125.107	Engineering32	Engineering32	Up	1	0%	0%	0%	Normal
ovirtnode3	192.168.125.212	DCH	DCH	Up	1	13%	22%	0%	SPM

Bookmarks

Tags

Last Message: 2013-Feb-26, 14:45 User admin@internal logged in.

oVirt OPEN VIRTUALIZATION MANAGER

admin | Configure | Guide | About | Feedback

Data Center:

Data Centers Clusters Hosts Networks Storage Disks Virtual Machines Pools Templates Users Events

System

Expand All Collapse All

Name	Storage Type	Status	Compatibility Version	Description
DC	Shared	Up	3.5	

Storage Logical Networks QoS Clusters Permissions Events

Domain Name	Domain Type	Status	Free Space	Used Space	Total Space	Description
data	Data (Master)	Active	25 GB	70 GB	95 GB	

Bookmarks

Tags

Go to Events on this page 09:48 User admin logged in.

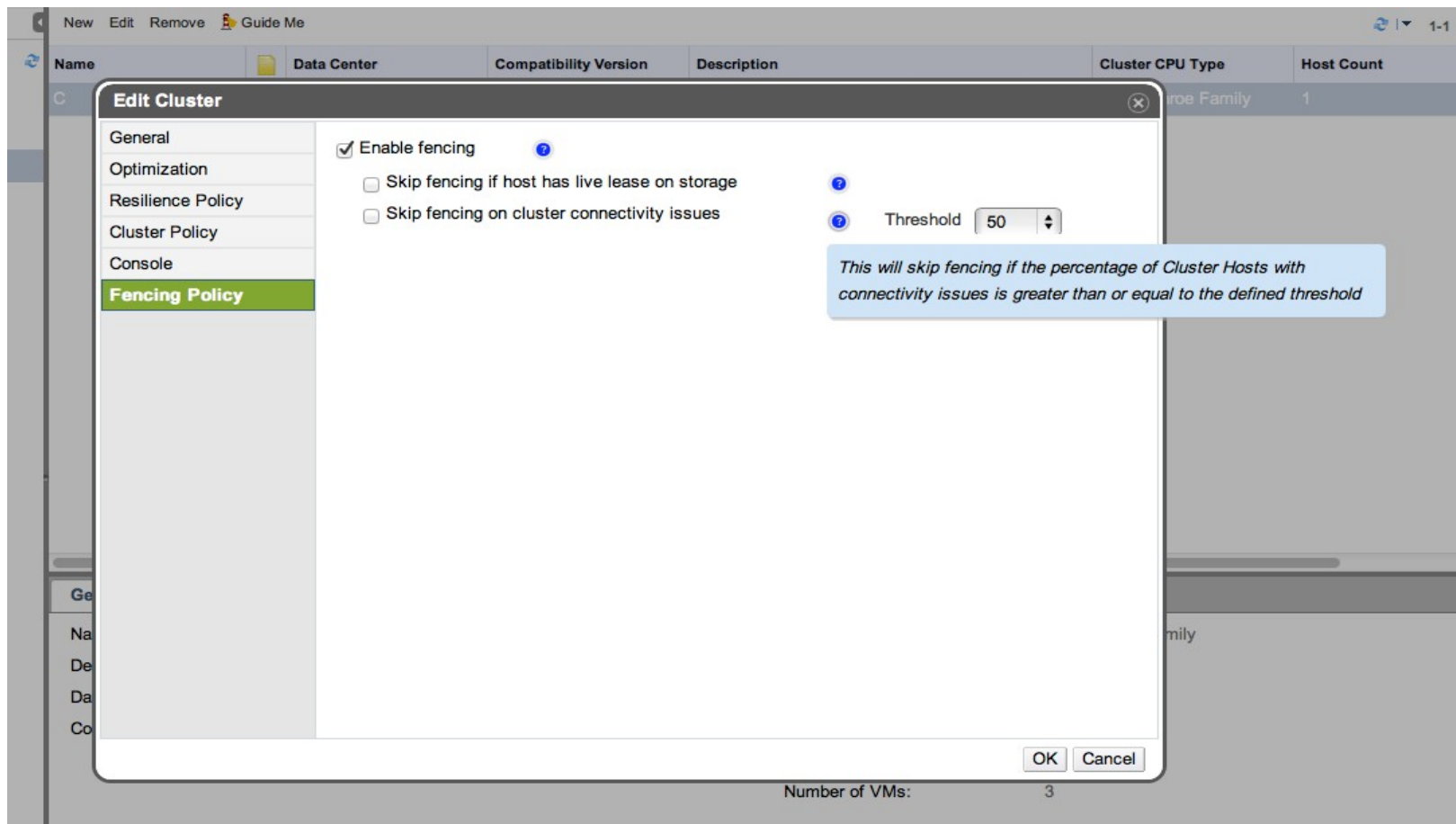
- Hosted engine improvements
  - Supported on SAN (iSCSI)
  - VLAN and bond interfaces
  - Support on EL 7
  - ovirt-node plugin
- Separate hosts for websocket-proxy, DWH, Reports
- oVirt Appliance
- Windows guest tools iso

## “infra” features

- AAA
- Foreman bare-metal provisioning
- Scaling improvements
  - ioprocess
  - JSON-RPC communication
  - everywhere!
- SELinux discrepancy warning
- CoCo – Command coordination framework in engine
- Fencing and power management improvements

# Fencing enhancements

- Kdump integration
- Fencing Policy subtab



## “network” features

- Connectivity log
- Preconfigured Neutron appliance
- ethtool and bridging options
- Network configuration unified persistence

## “SLA” features

- CPU & Disk QoS/capping
- NUMA
- Scheduler REST API
- oVirt optimizer (OptaPlanner integration)



# OptaPlanner integration



oVirt OPEN VIRTUALIZATION MANAGER admin Configure Guide About Feedback

Cluster:  ✕ ☆ 🔍

Data Centers **Clusters** Hosts Networks Storage Disks Virtual Machines Pools Templates Volumes Users Events

New Edit Remove Guide Me 🔄 1-2 ⏪ ⏩

Name	Data Center	Compatibility Vers	Description	Cluster CPU Type	Host Count	VM C
Default	Default	3.5	The default server cluster	Intel Nehalem Family 3	3	2
local	local	3.5		Intel Nehalem Family 0	0	0

General Logical Networks Hosts Virtual Machines Affinity Groups CPU Profiles Permissions **Optimizer result**

### SOLUTION STATUS

✔ Status: Solution received  
🔄 Solution is being refreshed every 30 seconds.  
 Freeze solution

### VMS THAT SHOULD BE STARTED

No VM starts are requested at this moment.

### MIGRATION / START STEPS

No migrations are needed at this moment. The state is stable.

### TARGET STATE

host	vm	memory [all in GB]	
		used	available
🔗 Host_two		0.3	1.0
	🖥️ aff_1	0.3	0.3
🔗 Host_three		0.0	1.0

This host has no VMs

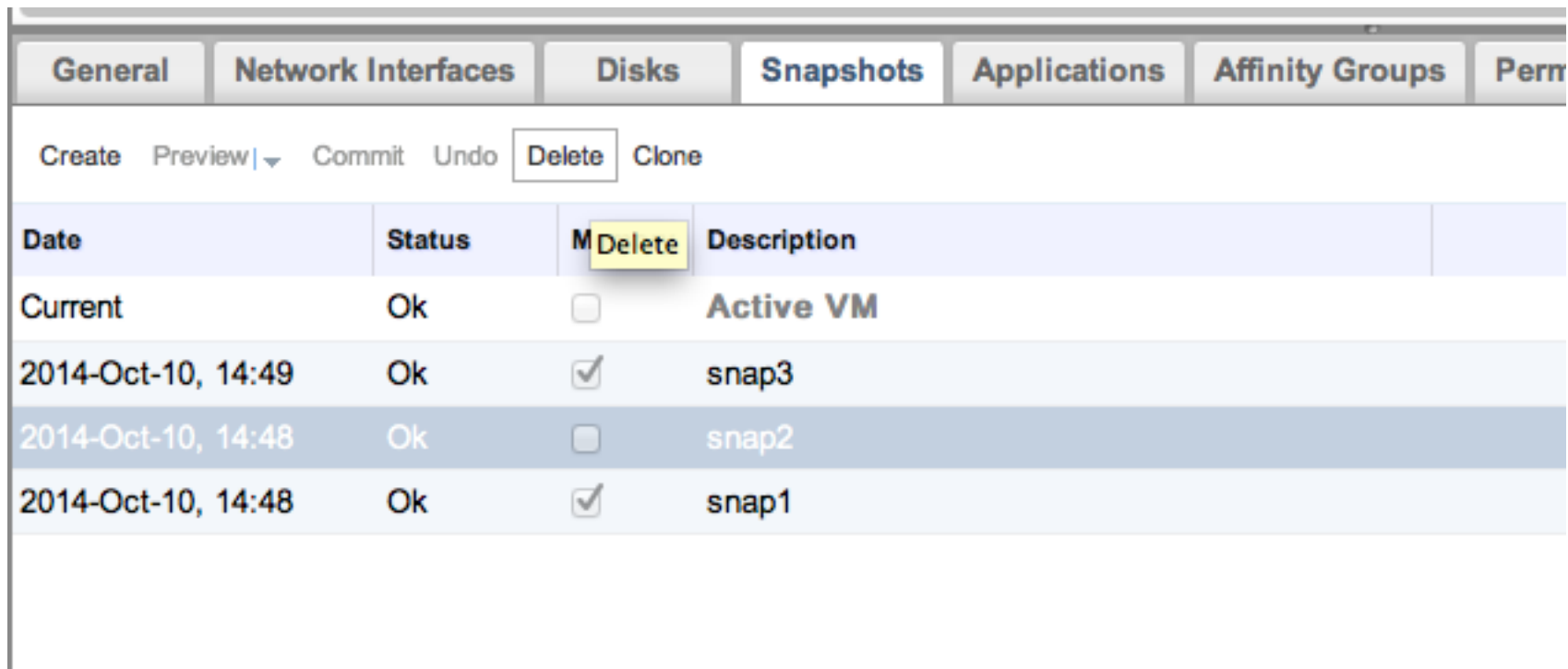
Last Message: ✔ 2014-Sep-29, 13:25 User admin logged in. 🚨 Alerts (3) 📧 Events 📁 Tasks (0)

## “storage” features

- Continue on SPM removal
  - Storage pool metadata removal from master storage domain
  - Store OVF on any domain
- Import existing data domain
- Live merge

# Live merge

- Snapshot deletion while VM is running
- Complex behind-the-scene operation



Date	Status	M Delete	Description
Current	Ok	<input type="checkbox"/>	Active VM
2014-Oct-10, 14:49	Ok	<input checked="" type="checkbox"/>	snap3
2014-Oct-10, 14:48	Ok	<input type="checkbox"/>	snap2
2014-Oct-10, 14:48	Ok	<input checked="" type="checkbox"/>	snap1

# “virt” features



- Instance types

# Instance types

- Predefined HW profiles

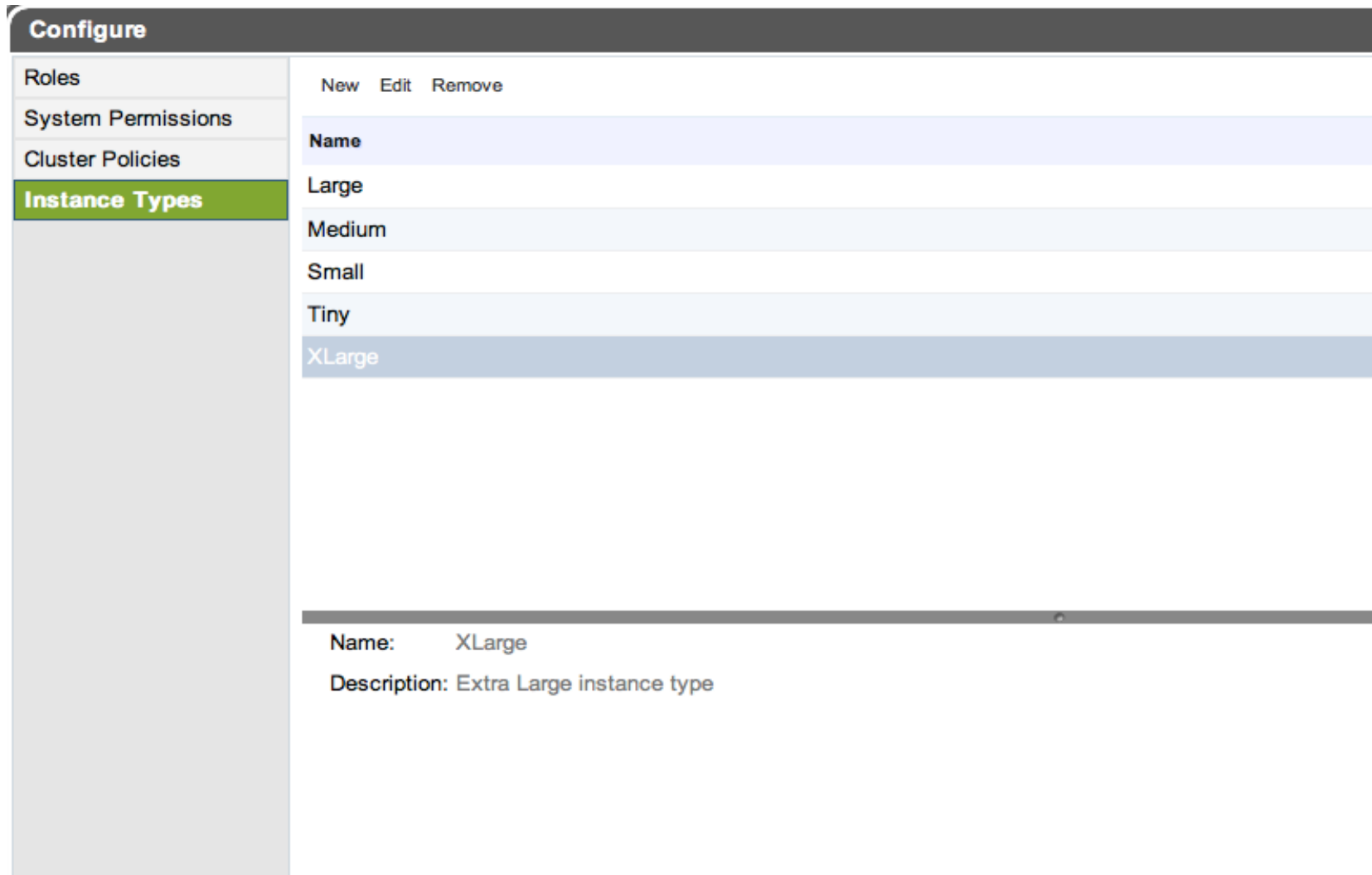
The screenshot displays the configuration interface for an instance in oVirt. The interface is organized into sections. The top section, highlighted in light gray, contains three dropdown menus: 'Operating System' set to 'Other OS', 'Instance Type' set to 'Medium', and 'Optimized for' set to 'Server'. Below this, the 'Memory Size' is set to '4096 MB'. The 'Total Virtual CPUs' field is currently disabled, indicated by a blue question mark icon and a tooltip that reads 'The fields is attached to the currently selected instance type'. Below this, there is a section for 'Advanced Parameters' with a right-pointing arrow icon. Under 'Advanced Parameters', 'Cores per Virtual Socket' and 'Virtual Sockets' are both set to '1'. At the bottom left, the 'General' tab is selected.

Operating System	Other OS
Instance Type	Medium
Optimized for	Server
Memory Size	4096 MB
Total Virtual CPUs	?
Advanced Parameters	>
Cores per Virtual Socket	1
Virtual Sockets	1

General

# Instance types

- Predefined set of instances



The screenshot shows the 'Configure' page in oVirt. On the left is a sidebar with navigation options: Roles, System Permissions, Cluster Policies, and Instance Types (which is highlighted in green). The main content area has a dark header with 'Configure' and three buttons: 'New', 'Edit', and 'Remove'. Below this is a table of instance types with a 'Name' header. The table lists five types: Large, Medium, Small, Tiny, and XLarge. The 'XLarge' row is highlighted in blue. At the bottom of the main area, there is a detailed view for the selected 'XLarge' instance type, showing its name and description.

Name
Large
Medium
Small
Tiny
XLarge

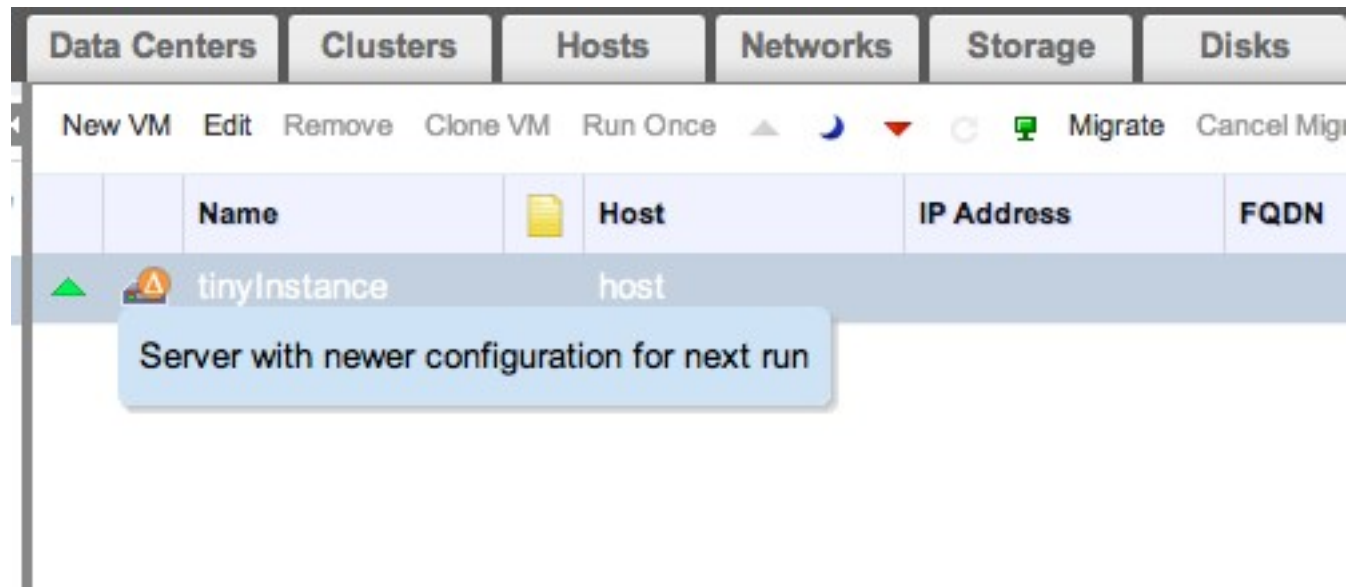
Name: XLarge  
Description: Extra Large instance type

## “virt” features

- Instance types
- Edit running VM properties

# Edit running VM properties

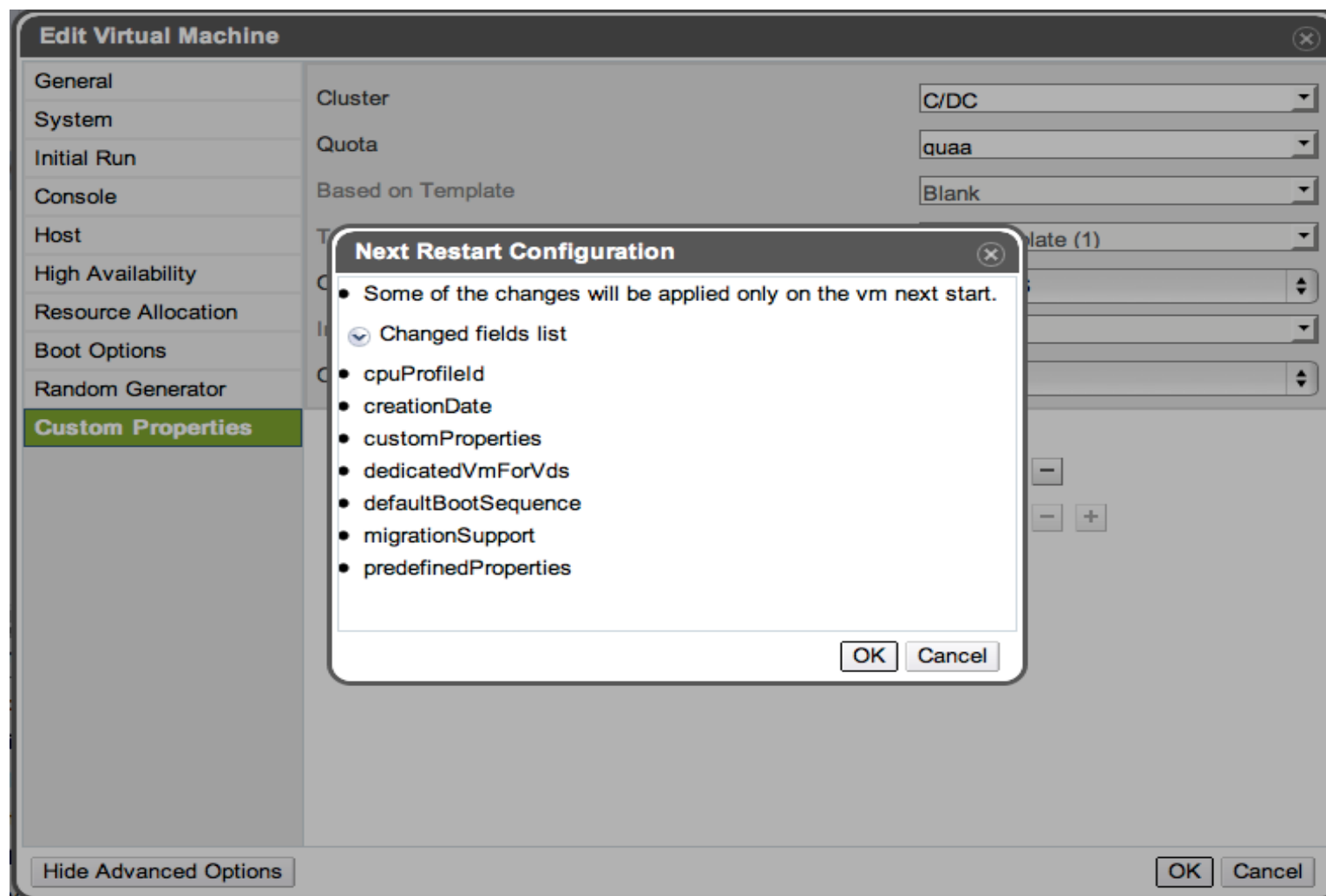
- All properties are now changeable
- Apply on next run





# Edit running VM properties

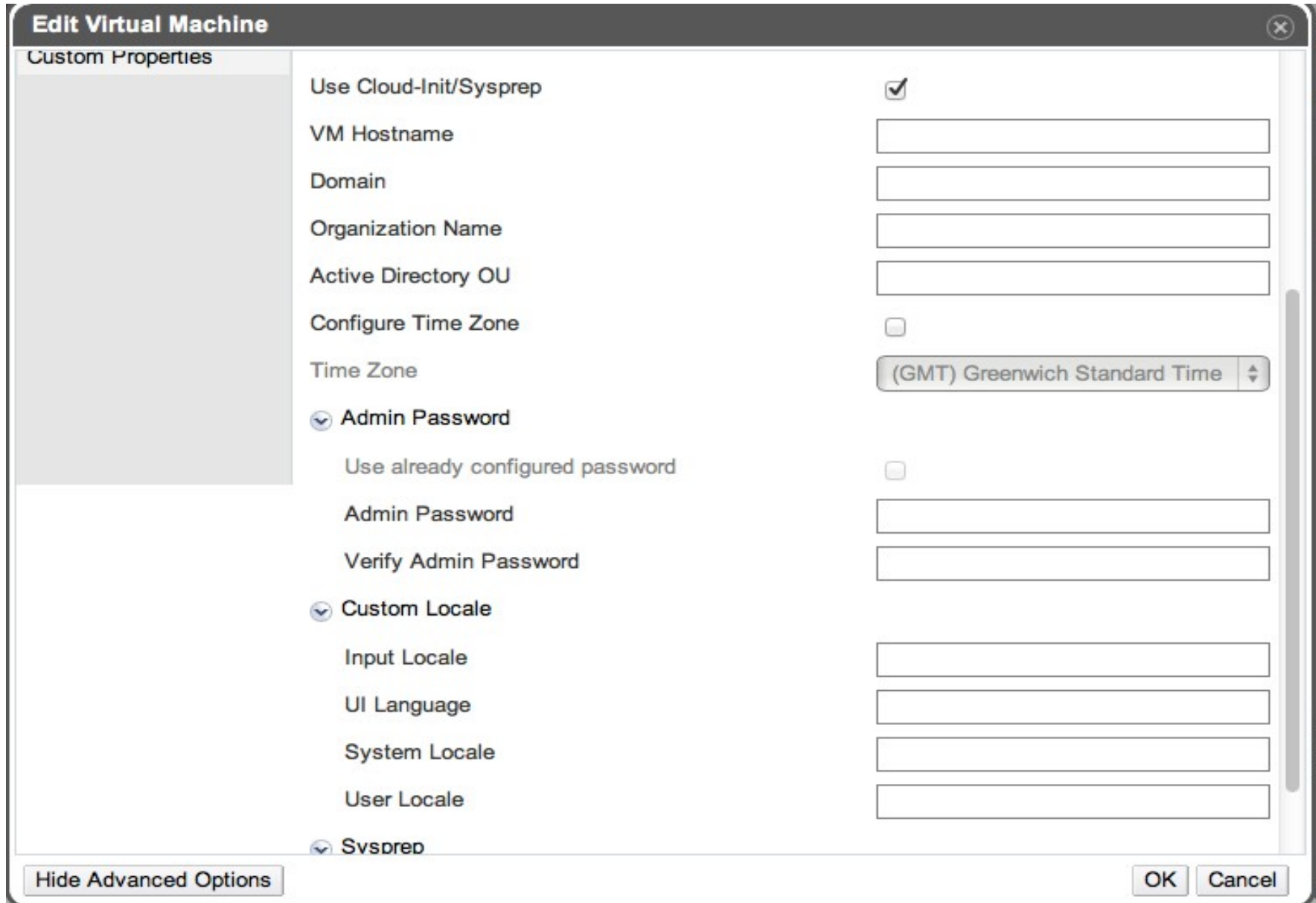
- What was changed?



## “virt” features

- Instance types
- Edit running VM properties
- Live migration progress in UI
- Virtio-rng support
- More options in sysprep

# Sysprep enhancements



**Edit Virtual Machine** [Close]

Custom Properties

Use Cloud-Init/Sysprep	<input checked="" type="checkbox"/>
VM Hostname	<input type="text"/>
Domain	<input type="text"/>
Organization Name	<input type="text"/>
Active Directory OU	<input type="text"/>
Configure Time Zone	<input type="checkbox"/>
Time Zone	(GMT) Greenwich Standard Time [Dropdown]
<b>Admin Password</b>	
Use already configured password	<input type="checkbox"/>
Admin Password	<input type="text"/>
Verify Admin Password	<input type="text"/>
<b>Custom Locale</b>	
Input Locale	<input type="text"/>
UI Language	<input type="text"/>
System Locale	<input type="text"/>
User Locale	<input type="text"/>
<b>Sysprep</b>	

Hide Advanced Options [OK] [Cancel]

## Near future?

- move GUI to use REST
- Removal of SPM
- Smoother OpenStack integration, CEPH
- v2v integration
- Adopting more EL7 KVM features (hotplug, migration)
- Instance images
- Hostdev passthrough
- More scheduling policies
- AutoNUMA
- Networking SR-IOV
- engine<->vdsm events infrastructure

# THANK YOU !

[http://www.ovirt.org/OVirt\\_3.5\\_Release\\_Notes](http://www.ovirt.org/OVirt_3.5_Release_Notes)

Michal Skrivanek, [mskrivan@redhat.com](mailto:mskrivan@redhat.com)  
mskrivanek at #ovirt (irc.oftc.net)